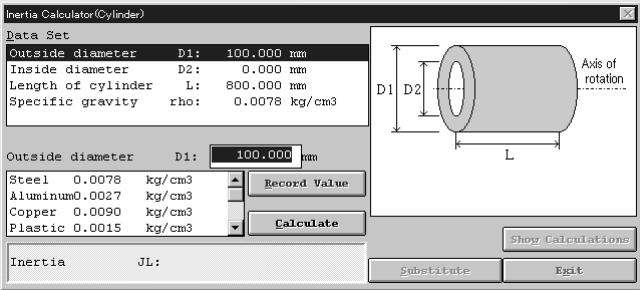
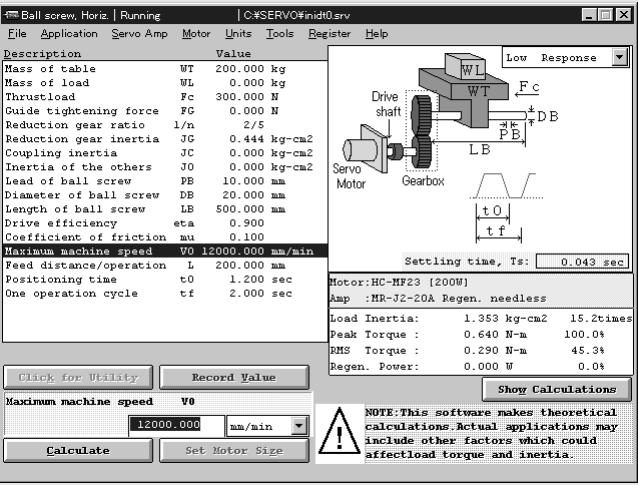


Using a Personal Computer

Mitsubishi has designed softwares that are easier to use and can be run on a personal computer.

■ Capacity selection software
MRZJW3-MOTSZ71E

A user-friendly design facilitates selection of the optimum servo-amp, servomotor (including brake and reduction gear), and optional regeneration units when you enter constants into machine-specific screens.



Features

- (1) Windows 3.1 and Windows 95 (Note 1) Compatible
Works on computers running Windows 3.1 or Windows 95. Requires at least 8 MB of available RAM and 4 MB of available hard-disk space.
- (2) Provides numerous structural options. Handles ball screws, rack and pinions, roll feeds, rotating tables, dollies, elevators, conveyors, and other (direct inertia input) devices.
- (3) Easy to convert units. It's easy to calculate and convert in SI, MKS mass, and inch/pound units.

Specifications

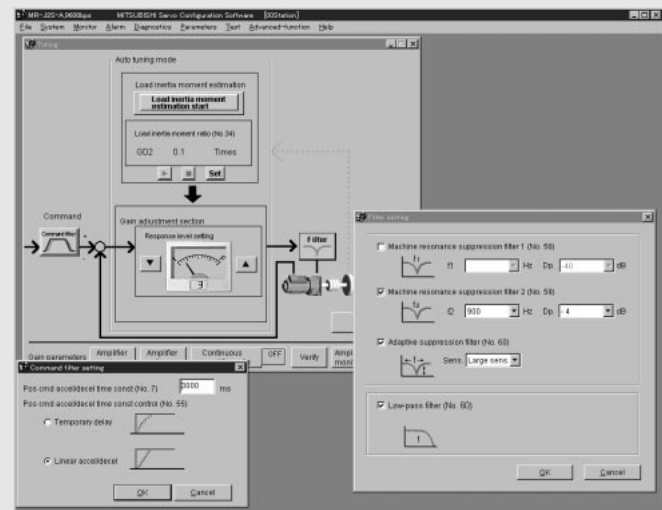
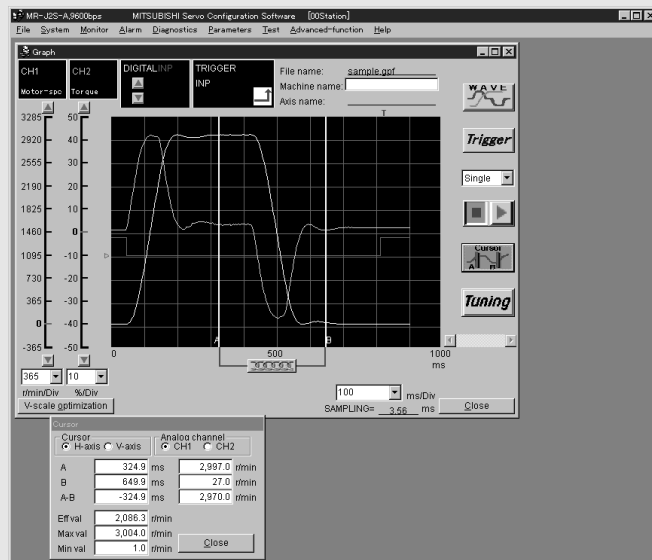
Parameter		Description
Types of structural machine elements		Nine types: Horizontal ball screws, vertical ball screws, rack and pinions, roll feeds, rotating tables, dollies, elevators, conveyors, and other (direct inertia input) devices.
Output of results	Parameters	Selected servo-amp name, selected servomotor name, selected regeneration unit name, load inertia moment, load inertia moment ratio, peak torque ratio, effective torque, effective torque ratio, regenerative power, and regenerative power ratio.
	Printing	Prints the input parameters, calculation process, and selected results.
	Data storage	Gives the input parameters a file name and saves them to a floppy.
Inertia moment calculation function		Five types: concentric cylinder, off-axis square shaft, linear motion, hanging, and reduction gear.

Notes:
1. Windows is a registered trademark of the Microsoft Corporation.
2. This software may not run correctly on all personal computers.

Using a Personal Computer

■ Setup software MRZJW3-SETUP 121E

This software makes it easy to do monitor display, diagnosis, reading and writing of parameters, and test operations from the setup using a personal computer.



Features

- (1) Windows 95 and Windows 98 (Note 1) Compatible
Works on computers running Windows 95 or Windows 98.
Can be setup using a personal computer.
- (2) Provides numerous monitor functions. Provides graph display function that enables display of servomotor status upon input signal triggers such as command pulses, droop pulses, and r/min.
- (3) Run Tests from a Personal Computer
Allows servomotors to be tested easily from a personal computer.

Operating conditions

Computer	DOS/PC/AT compatible) running Windows 95 or 98 (Pentium 133MHz processor or higher is recommended), 16MB or more of available RAM required, 20MB or more of available hard-disk space required, serial port connection
OS	Windows 95/98
Monitor	800x600 resolution or better, 256 color or 16-scale monochrome
Keyboard	Personal computer compatible
Mouse	Compatible with Windows 95/98, should not be serial mouse
Printer	Compatible with Windows 95/98
Communication cable	MR-CPCATCBL3M

Specifications (Items in parentheses do not work with the MR-J2S.)

Main-menu	Functions
Monitors	Batch display, fast display, and graph display.
Alarms	Alarm display, alarm history, display of data that generated alarm, and (pre-alarm graph display).
Diagnosis	DI/DO display, display of reason motor is not running, (display of settling time), display of cumulative time power is on, software number display, motor information display, tuning data display, ABS data display, automatic VC offset display (Note 2) and axis name setting
Parameters	Parameter setting, list displays, display of change lists, display of detailed information, tuning, (feed system selection and device setting).
Test operations	JOG operation, positioning operation, operation without motor, forced DO output, program operation using simple language, and (one-step feed).
Advanced function	Machine analyzer, gain search, machine simulation
Point data	(Position/speed block data batch display, data setting, teaching and point table).
File operation	Data reading, storage, and printing.
Other	Automatic operation and help display.

Notes:

1. Windows is a registered trademark of the Microsoft Corporation.
2. Automatic VC offset display works only with the MR-J2-A series.
3. This software may not run correctly on all personal computers.
4. The above screens are for reference purpose, these may be different to the actual screens.